

differential pressure gauges PN 100 with double diaphragm DS 4", 6" (100-150mm)



PED 2014/68/UE ATEX 2014/34/UE

These instruments are used to measure the differential pressure of gaseous and liquid fluids which are not highly viscous or do not crystallize. The double membrane measuring cell features a system composed of two blocking devices which, in case of unilateral overpressure, create a liquid layer which support the measuring element. The linear movement of the membrane is turned into a circular movement by a lever and transmitted to the pointer by an amplifying movement.

2.16.1 - Standard Model

Accuracy class: 2,5 as per EN 837.

Scale amplitude: 180°.

Static pressure: 1500 *psi max* (100 bar).

Ambient temperature: -40...+149°F (-40...+65 °C).

Process fluid temperature: +302°F (+150 °C).

Protection: IP 55 as per EN 60529/IEC 529.

Process connection: AISI 316L st.st.

Elastic element: AISI 316L/Duratherm st.st. double diaphragm.

Gasket: VITON and PTFE.

Case: stainless steel.

Ring: stainless steel polished, bayonet lock.

Window: glass.

Movement: stainless steel.

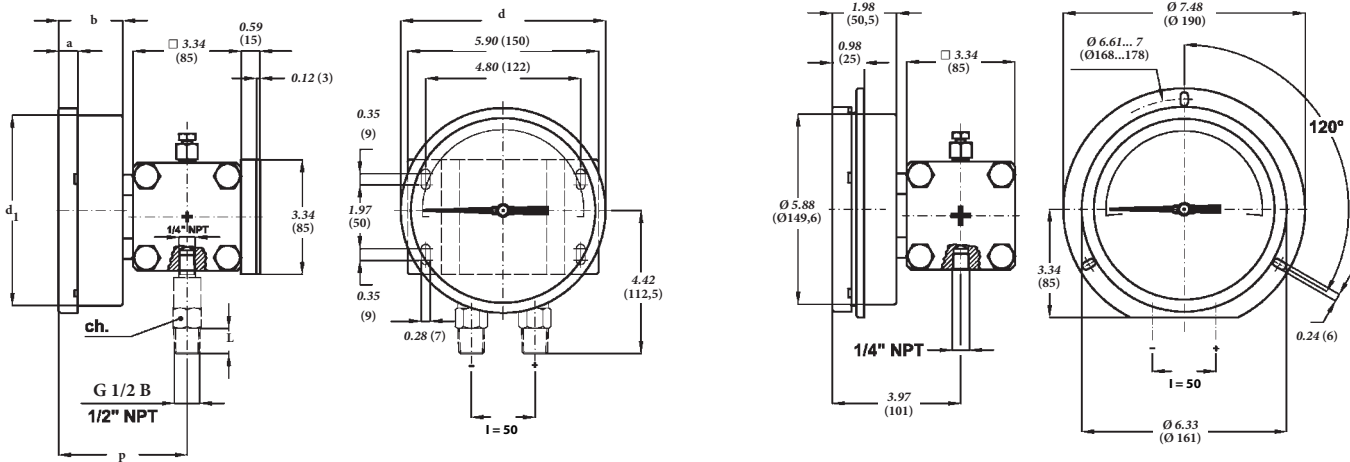
Dial: aluminium, white with black markings.

Pointer: aluminium, micrometric adjustable.

RANGES	mbar	mmH2O	bar	kPa	psi
0...0,4			♦		
0...0,6			♦		
0...1			♦		
0...1,6			♦		
0...2,5			♦		
0...4			♦		♦
0...6			♦		♦
0...10			♦		♦
0...15					♦
0...30					♦
0...40				♦	♦
0...60				♦	♦
0...100				♦	♦
0...160				♦	♦
0...200					♦
0...250				♦	♦
0...300					♦
0...400	♦			♦	
0...600	♦			♦	
0...1000	♦			♦	
0...1600	♦				
0...4000		♦			
0...6000		♦			
0...10000		♦			

**differential pressure gauges PN 100 with double diaphragm,
DS 4", 6" (100-150mm)**

MD16



**Lower (Mounting code A) , with back flange
(Option code C): DS 4", 6" (100-150mm)**

**Lower (Mounting code A) , with front flange (Option code
F : DS 4" - 100mm; Option code E : DS 6" - 150mm)**

dimensions : inches (mm)

Mounting	DS	F	a	b	d	d ₁	p	L	ch	Weight lbs (kg)
Wall	E 4" (100mm)	41M G 1/2 A	0.51 (13)	1.91 (48,5)	4.35 (110,5)	3.98 (101)	3.88 (98,5)	0.79 (20)	0.87 (22)	10.71 (4,86)
Wall	G 6" (150mm)		0.59 (15)	1.99 (50,5)	6.34 (161)	5.89 (149,5)	3.97 (101)	0.79 (20)	0.87 (22)	11.79 (5,35)
Panel	G 6" (150mm)		43M 1/2-14 NPT	1 (25,5)	1.99 (50,5)	6.34 (161)	5.89 (149,5)	3.97 (101)	0.79 (20)	0.87 (22)

OPTIONS

C - Back flange	P02 - Oxygen service (5)
F - Front flange for DN100 instruments	R10 - Glycerine filled case. Ambient temp. +32...+149°F (0...+65 °C). (8)
E - Front flange for DN150 instruments	R11 - Silicon oil filled case. Ambient temp. -40...+149°F (-40...+65 °C). (6) (8)
C40 - AISI 316L st.st. case and ring	S31 - 2" pipe mounting bracket
E30 - NACE MR0175 version (ISO 15156) (2)	T01 - Tropicalization (8)
E65 - Protection IP65 (3) (8)	T32 - Safety glass window (8)
L22 - Maximum pointer IP65 (4)	2G9 - ATEX versions : II 2G c (8) (9)
M23 - MONEL 400 diaphragms	2D9 - ATEX versions : II 2GD c (8) (9)
Mechanical electric contacts (1)	054 - Centre-to-centre distance "I" = 54 mm

(1) Codes, descriptions and wiring on data-sheet MN14

(2) Available for ranges ≥ 1 bar. To be ordered with Monel 400 diaphragm.

(3) To be ordered with Plexiglas window

(4) Available only for ranges ≥ 1 bar

(5) Filling of internal chamber with Fluorolube

(6) Window gasket and blow out vent: VITON

(8) Not available with electric contacts

(9) For constructive details see ATEX execution data-sheet

"HOW TO ORDER" SEQUENCE

Section / Model / Case / Mounting / Diameter / Special version /Range / Process connection / Options
2 16 1 A E --- 41M - G 1/2 A M C, E
G 43M - 1/2" NPT M C40...054
23F - 1/4" NPT F

